

ST. MARY'S CHURCH

Father Edward Oen, C.P.P. S. Pastor

9208 Main Street St. Benedict, KS. 66538

Father Edward Oen: Residing at 357 3rd St., Baileyville, KS 66404 Phone: 336-6464

St. Mary's Church Phone: 785-336-3174 Website: www.stmstb.org

Secretary's email: tahaverkamp@bbwi.net

Mass Schedule: Sunday Morning 10:00 AM

Friday morning 8:30AM

Marriage: Contact priest 6 Months before - Baptism Call Father Ed at 336-6464

Confession: First Friday mornings 7:45AM TO 8:00AM before mass

OCTOBER 21, 2012 TWENTY-NINTH SUNDAY IN ORDINARY TIME



Regular Mass Schedule:

BAILEYVILLE---Saturday 7:00 p.m. and Sunday 8:30 am

Weekday masses at 8:30 a.m.

ST. BENEDICT---Sunday 10:00 a.m.

Fridays, 8:30 a.m.

Mon.--Oct. 22--Liv/Dec Leonard & Theresa Heiman Family

Tues.--Oct. 23--Henrietta Broxterman

Wed.--Oct. 24--Liv/Dec Melvin Ronnebaum Family

Thur.--Oct. 25--Vocations to Priesthood & Religious Life

Fri.--Oct. 26--Special Intention Raymond & Joan Schmitz

Sat.--Baileyville--Oct. 27--Liv/Dec Alvin & JoAnn Deters Family

Sun.--Baileyville--Oct. 28--People of the Parishes

Sun.--St. Benedict--Oct. 28--Francis H. Tangeman (25th Ann.)

COLLECTIONS FOR Oct. 14, 2012--Plate: \$394.00, Envelopes: \$1617.00, DVD: \$20.00, Stola: \$20.00, Total: \$2051.00

LEAVEN SUBSCRIPTIONS are due in October. Price is \$18.00. There is an envelope in you packet to take care of this.

ELEMENTARY RELIGION--Grades K-5-- Wednesday, Oct. 24, after school.

THE NEXT INQUIRY CLASS will be Sunday, October 28 from 7PM to 8:30PM at Sacred Heart, Baileyville, at the rectory.

MISSING--Old Registry Book from the back of church is missing. It is very much needed. If anyone has it, please leave on the kitchen table at the rectory.

FEAST OF ST. GASPAR, founder of the Missionaries of the Precious Blood is today, October 21.

ALL SAINTS DAY MASSES--(November 1) will be at St. Mary's at 6:00PM
Sacred Heart at Baileyville at 10:45AM and 7:30PM
Sts. Peter & Paul are Oct. 31 at 5:00PM & Nov. 1 at 7:00AM & 9:00AM.

MASS CHANGE--STS. PETER & PAUL, SENECA will change their Saturday night Mass on Saturdays, starting November 11 to 4:00PM until the beginning of Daylight Saving Time.

ARCHBISHOP NAUMANN INVITES ALL MARRIED COUPLES! Whether you have been married one year or 50, it is a great idea to take time to invest in your relationship. A day of marriage enrichments with noted Catholic speakers and authors, Dr. Greg and Lisa Popcak, will be offered on Saturday, November 3 from 8:15AM to 3:00PM. For more information go to www.archkck.org/popcak

CATECHISM--A Pilgrimage of Faith--Learn about the faith you profess. Journey through the universal book that explains it all. 24 sessions grouped into four parts over a two-year period. Class at Sacred Heart, Sabetha, starts on November 8 from 7:00 to 8:00PM. More information on the bulletin board.

MISSIONARIES OF FAITH--

Today is World Mission Sunday. We are called to this Eucharistic celebration, along with Catholics in every parish, chapel and church throughout the world, to fulfill the call we first heard at Baptism, the call to be missionaries, to share our faith. On World Mission Sunday, we are called in a special way to be "missionaries of faith" through prayer and participation in the Eucharist, and by giving generously to the collection. Let us pray especially at this Mass for all who long to hear the hope-filled, saving message of Jesus and for the priests, religious and lay catechists in mission countries worldwide who offer them that "Good News."



Let us pray especially at this Mass for all who long to hear the hope-filled, saving message of Jesus and for the priests, religious and lay catechists in mission countries worldwide who offer them that "Good News."

THE GREATEST TEST--The greatest test of courage on earth is to bear defeat without losing heart.

Ministries for October 28, 2012

Cross: Cole Engelken

Servers: Devon Siess & Kyle Haverkamp

Eucharistic Ministers: Troy Nordhus, Robert Engelken, Laurie Strathman, Evelyn Rottinghaus, Kevin Sudbeck

Lector: Don Lueger

Commentator: Dan Tangeman

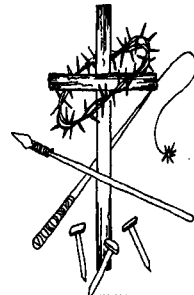
Ushers: Jeff Stallbaumer & Roger Stallbaumer

Offertory Gifts: Dave & Duana Huerter Family

Rosary Leader: Richard Schmitz

Organist: Kayla Sudbeck

Cantor/Song leader: Staci Haug





Remember in your prayers those who are sick, taking treatments; hospitalized or still recovering: Gene Holthaus, Donna Hulsing, Elijah James Ruedge, Cyrilla Sudbeck, Michelle (Damian) Buessing, Odelia Sudbeck, Jackie Olberding, Jordan Sudbeck, Leroy Tangeman, Nancy Deters, Martha Engelken, Brad Bowhay, Margie Miller, Greyson Murphy (grandson of Stan & Cindy Murphy), Melvin Bergman, Max Rusche, Shirley Claas.

ALTAR SOCIETY NOTES

BINGO at the Life Care Every 3rd Wednesday at 1:30

*****November 4--St. Mary's Pancake Breakfast**

Serving will be from 7:30AM to 1:00PM. Freewill Donation. Circles 3 & 4 are in charge. If anyone would like to donate eggs, butter, etc., or if you have an item for the chance table, please contact Anita Schmitz at 336-2213 or any Altar Society Officer.

*****November 2nd--set up for pancake breakfast.** Officers come at 5:00PM and Circles 3 & 4 leaders come at 5:30PM.

*****November 4th, Pancake Breakfast**

Officers come at 5:00AM, Circles 3 & 4 leaders come at 6:30AM. Circles 1 & 2 leaders come at 7:00AM. All leaders help clean up. CYO students are asked to please wait tables. Grades 11 come from 7:15AM to 10:00AM and Grades 9,10,12 come from 10:00AM to the end.

*****November 14, 2012--St. Mary's Annual Church Cleaning**

Circles 1 & 2 are asked to come from 5:00 to 7:00PM. And Circles 3 & 4 are asked to come from 6:00PM to the end. Also, parish council members and officers husbands are asked to help. Please bring buckets, rags, kneepads, etc.

*****February 3, 2013--Annual Soup Day**

*****June 23, 2013--Annual Picnic**

****STUFFED ANIMALS--**We no longer will be collecting stuffed animals for the picnic. We are doing away with the Animal Kingdom and adding some new games.

CHRISTMAS CANTATA--Salem Lutheran Church will host the Community Christmas Cantata on December 9. Rehearsals will be on Sunday evenings from 7:30 to 8:45pm, beginning on September 30 at the Salem Lutheran Church at Axtell. Singers of all ages are invited to sing. The Cantata this year is "Let the Whole World Sing."

MAX RUSCHE & SHIRLEY CLAAS BENEFIT--Sunday, November 11 from 10:00AM to 2:00PM at the Seneca K of C Hall. Soup, sandwiches and pie will be served. Auction at 2:00PM. If you like to donate items for the meal, raffle or auction, please contact Julie Bergman at 294-2144 or julieb@rainbowtel.net or Clete Kramer at 336-3891 or Lena Winkler at 785-477-1926 or lenaw87@yahoo.com.

STS. PETER & PAUL SCHOOL PTO SUPPER, Seneca, will be held on Sunday, November 18th, serving chili, vegetable beef and chicken noodle soups, sandwiches, hotdogs, chili dogs, desserts and drinks, beginning at 4:30 PM, in the parish hall. Chance drawings with lots of prizes. Freewill offering. Your support is greatly appreciated!

SENECA LION'S CLUB will have their annual Pancake Breakfast on Sunday, October 28th from 7AM to 12PM, at the Lions Cabin at Lake Nemaha. Freewill offering. Everyone Welcome!

The cafeteria is spoken for on these dates: 2012– Nov.2,3,4, 22, 25, Dec. 1, 22, 23, 25,29--2013--Feb. 2,3,4,June 12, 16 thru 24, Aug.4.

Donations can be given toward the cost of supporting seminarians in Africa where Father Felix is from . Mark your donations. There are many seminarians but funds for education are needed.

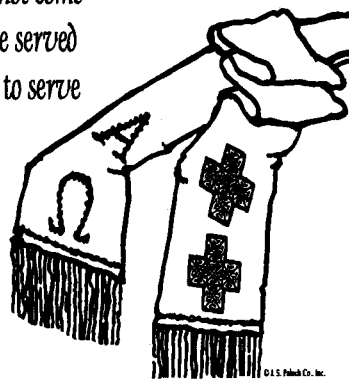
DVD'S of THERESA RETTELE'S Tour of St. Mary's Church is available at the Rectory for the cost of \$10.00.

150th Anniversary Books continue to be a popular item. There are copies remaining for purchase. No additional copies will be printed. Orders can be placed online through the church website at www.stmstb.org or picked up at the Kansas Rural Water Association office west of Seneca. Phone: 336-3760.

CANDLES available for home use. Anyone wanting some call the rectory. 336-3174. The glass container are red and green now. Cost of candles are now \$5.00.

THE HUMANITY OF JESUS CHRIST--All three readings today support--each in its own way, of course--a reflection on the humanity of Jesus Christ and how that humanity played a key role in the drama of our salvation. Although not chosen specifically to coordinate with the other two readings, today's second reading does in fact carry forward the theme of Christ's humanity in a remarkable way. The author of the Letter to the Hebrews highlights the solidarity that exists between Jesus and us, precisely because in his human nature Jesus has known the same sufferings and testing that are our own experience. Because he can "sympathize with our weaknesses," we can "approach the throne of grace to receive mercy." For the author of Hebrews, the humanity of Jesus was an essential requirement for his redemptive death, as well as an invitation to us to find in Jesus someone with whom we can identify in our daily struggles.
 Copyright © J. S. Paluch Co.

The Son of Man
 did not come
 to be served
 but to serve



TREASURES FROM OUR TRADITION--In the eyes of many, the papacy is a peculiar institution. Still bedecked with some of the regalia of medieval princes, contemporary popes have worked to define their role in ways that give them influence over the world both within and outside the Church. The trappings of royalty, never really a good fit for the successors of Peter, could render a pope distant and irrelevant. On the other hand, the tendency of many to think of the pope as if he were the CEO of a modern

corporation is also inaccurate. St. Gregory the Great, himself a pope, first called the pope "the servant of the servants of God." He is "first among equals" among other bishops, who by tradition exercise significant authority within their own dioceses, not depending on the pope's authority. This arrangement often puzzles those accustomed to a top-to-bottom "chain of command." History has seen popes of many styles, but most strive to live up to Gregory's definition. Perhaps today's Gospel puts it all into the best perspective: "Whoever wishes to be first among you will be the slave of all." Pray for the pope this week.
 —James Field, Copyright © J. S. Paluch Co

Visit those who are shut-in...
 © J. S. Paluch Co., Inc.

SAINTS AND SPECIAL OBSERVANCES
 Sunday: Twenty-eighth Sunday in Ordinary Time
 Monday: St. Teresa of Jesus
 Tuesday: St. Hedwig; St. Margaret Mary Alacoque;
 National Boss Day
 Wednesday: St. Ignatius of Antioch
 Thursday: St. Luke
 Friday: Ss. John de Brébeuf, Isaac Jogues, and Companions
 Saturday: St. Paul of the Cross; Blessed Virgin Mary

ARCHDIOCESE OF KANSAS CITY IN KANSAS is online. Breaking news and upcoming events can be found on Facebook at www.facebook.com/achkck. Follow us on twitter @archdiocesekck. The archdiocese website is www.archkck.org.

"FAITH: LOVE IT, LEARN IT, LIVE IT." --During our celebration of the *Year of Faith*. Our parish has been ask by Archbishop Naumann to open our hearts to God's transforming grace. Now is the time to consider how you will make time and take advantage of the opportunities to love, to learn and to live faith in our parish. There are programs available right now at www.archkck.org/faith. What will you do?

"LIVING IN LOVE" MARRIAGE ENRICHMENT RETREAT
 Regional event for married couples to reconnect and revitalize their marriages. Open to any Catholic in the Archdiocese, but registrations in advance is required. Strengthen your relationship with your spouse, reconnect with your personal love story and gain a sense of purpose, hope and direction for the future as a couple through the "Living in Love" Marriage Enrichment Retreat. This one-and-a-half-day enrichment retreat sacramental call to witness Christ's love in marriage. Presenters include Ron and Kathy Freher of the pastoral and Matrimonial Renewal center, founded by Fr. Church Gallagher, S.J., of the Worldwide marriage Encounter. The retreat is scheduled at Sts. Peter and Paul Catholic Church, Seneca, on Saturday, October 20, 2012 from 8:30am to 9:00pm and on Sunday, October 21, 2012 from 8:30 to 4:00pm.

FREE COLLEGE VISIT WEEKEND--High School men grades 10-12 are invited to visit an active college seminary on November 10-12 at Conception Seminary in Missouri. See how joyful and vibrant seminary life is and meet our young men who are deepening their friendship with Christ. There is no cost. Vocation director Fr. Mitchell Zimmerman will provide transportation and accompany visitors, leaving at 3:30PM, Saturday and returning at 8:30PM, Sunday. Registration is required by Nov. 5 at www.kckvocations.com in "latest news", or email vocations@archkck.org.

SOUTHERN REGION MEN'S RETREAT at Sacred Heart Parish Hall in Ottawa, Ks, on Saturday, November 17th from 9AM to 3PM. Registration at 8:30AM. Adults: \$20.00 with lunch served and Jr/Sr High Students is \$10.00. To pre-register contact either George Steinberger at 785-835-6654 or Lester Wuertz at 785-835-6298

PRAYER OF THE WEEK
October 21, 2012, Twenty-ninth Sunday in Ordinary Time
 Almighty ever-living God,
 grant that we may always conform our will to yours and serve your majesty in sincerity of heart. Through our Lord Jesus Christ, your Son, who lives and reigns with you in the unity of the Holy Spirit, one God, for ever and ever.

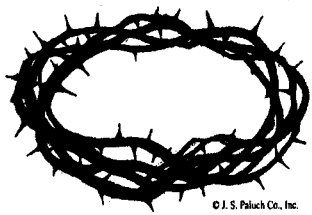
Reflection question:
 When do I resist conforming my will to God's?
 Collect text from the English translation of *The Roman Missal*, © 2010, International Commission on English in the Liturgy Corporation. All rights reserved.
 Copyright © J. S. Paluch Company, Inc.

HOLY HUMOR

After church, a little girl sat outside the building crying. When her older brother came out the door and noticed her in tears, he asked her what was wrong. "Father talked about the sin of vanity today." She sniffed. "I've been sinning a lot--every day I look in the mirror and tell myself how pretty I am."
 "Oh that's not a sin," the brother responded. "That's a Mistake!"

A priest was giving a lesson on the 23rd Psalm to a group of children. He noticed that Little Johnny seemed upset by the verse, "Surely, goodness and mercy will follow me all the days of my life." "What's wrong, Johnny?" the priest asked. "Well," replied Little Johnny, "I'm not worried about goodness and mercy, but I'm not sure I'd like Shirley following me around all the time."

Twenty-ninth Sunday in Ordinary Time
October 21, 2012
 Through his suffering, my servant shall justify many.
 -- Isaiah 53:11b
 © J. S. Paluch Co., Inc.



**St. Mary's Parish
Special Council Meeting Minutes
October 15, 2012**

The meeting was called to order at 7:00 p.m. Those present were: Dale Hall from BG Consultants, Father Owen, the Parish Council, the Finance Committee, and a few other parishioners.

Dale gave a description of the process needed to fix the foundation problem on the Northwest corner of the church along with a cost estimate. He also answered all questions from those who were present.

Elmer Ronnebaum has prepared a grant in an effort to get \$90,000 to help with the cost of this project. It was voted on to send the grant in for preliminary review. It was also decided that Elmer would prepare a cost synopsis for everyone to see with an opportunity to express their opinions by early in the week of October 22. A vote will then be taken to send in the final grant application, due November 1. It was noted that if a grant is received, it is in our best interest to use it, if we wish to receive grants in the future. So a vote to send in the final grant application is a decision to proceed with this project if the grant is received.

St. Mary's Parish Finance Council Minutes
October 15, 2012

The Finance Council meeting was called to order at 6:30 pm by Chairman, David Huerter. Members present were Fr. Ed Oen, Wayne Schmitz, Leon Holthaus, John Haug, Joyce Schmitz, and Mary Beth Haverkamp.

Father opened the meeting with a prayer. Mike Scott's check for 2012 cash rent of the parish owned farm ground was accepted. As in the past, the money will be deposited in the cemetery fund.

The quarterly income and expense comparison report was presented and approved. Account balances from June 30, 2012 and October 13, 2012 were reviewed. Father reported that the archdiocese is paying one percent interest. The council decided not to transfer any money at this time until the cost of the work on the church is known and the project is approved.

Father invited the finance council members to a meeting with a representative of BG Consultants who will make a presentation of necessary repairs to the northwest corner of the church and an estimation of cost. Available grant money will also be discussed. The meeting is scheduled for 7:00 pm following the conclusion of the finance meeting.

The council discussed the future of the school building. It has been decided to maintain minimal heat in the building at least until the school lease is concluded. Eisenbarth Plumbing will be installing a separate thermostat in the boy's restroom to control the level of heat in the building.

Father closed the meeting with a prayer. The meeting adjourned at 6:55pm. The next quarterly meeting is scheduled for January 14, 2013 at 6:30pm.

Report on Soils Investigation and Recommendations for Stabilization of the Northwest Corner of St. Mary's Church

As many parishioners and others are aware, a structural crack in the west wall of the church has worsened over recent years. Crack monitors, installed in 2006, document there is movement back and forth along the crack which begins at the roofline above the north door and extends down through the window and north door. There is a corresponding large crack in the foundation wall that is visible under the church. There is also a large foundation crack in the north wall that is visible under the church. Cracking of the plaster on the interior corresponds to the wall crack.

This summer the Parish solicited proposals from three architectural firms; the Parish contracted BG Consultants of Manhattan for consultation about the problem. A geotechnical firm, Terracon, conducted a soils investigation in September. Those studies and the recommendations of the engineers were presented by the architect at the meeting held last Monday, October 16, in the Parish cafeteria. Parishioners had been invited to attend; an announcement of the meeting was published in the October 15 *Sunday Bulletin*.

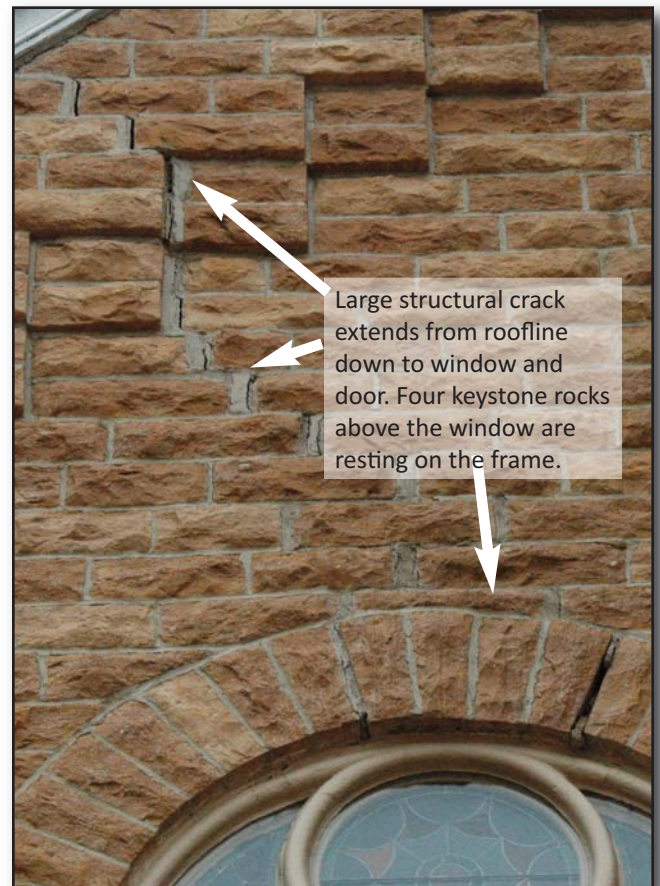
Dan Hall, architect with BG Consultants, stated that the conclusion by both the structural engineers at Terracon and at BG Consultants is that the northwest corner of St. Mary's Church is settling due to expansive soils, meaning soil swelling and shrinking due to wet/dry conditions. This problem continues and with each movement, the crack widens. The crack has widened by at least one inch since 2004 when the crack was coated with mortar. The separation is obvious when looking at the wall above the north door and window. There are four rocks in the arch above the window that are loose and are resting on the window frame.

The recommendation is to stabilize the foundation on the northwest corner of the building by underpinning the foundation by installing helical piers, clean the existing cracks in the masonry, bring the building to its original position to the extent possible, then point the masonry joints at crack locations, install foundation waterproofing with perimeter drain tile, add granular backfill and topsoil to provide positive drainage, and then rebuild the concrete ramp and stairs to the north entry door which needs to be removed for the project.

Because St. Mary's Church is listed on the National Register of Historic Places, the Parish can apply for a Heritage Trust Fund Grant. The maximum grant amount is \$90,000; the grants are administered by the Kansas Historical Society. In addition, the parish is eligible to apply for state tax credits of 30 percent of the project cost, less any grant received. The total estimated cost also includes a 20% contingency. The architect advises that his estimate is at a level to make sure that there is adequate funding. If the Parish is fortunate to be awarded the Heritage Trust Fund Grant, and with the benefit of state tax credits, it is estimated that the Parish's share of the project would be reduced to a range of \$70,000. The architect's total project estimate is \$227,500. The actual cost will not be known until specifications are developed and bids are received. The design work would proceed in early 2013 with construction hopefully to be completed in 2013. And again, the actual cost will only be known when bids are received from contractors who specialize in the installation of helical piers.

Heritage Trust Grants are competitive and so there is no guarantee that the grant will be awarded to St. Mary's. If the grant is not awarded, then the Parish will need to evaluate how to proceed.

Anyone having further questions is encouraged to visit with a member of the Parish Council or a member of the Maintenance Committee. The deadline for the application for the Heritage Trust Fund Grant is November 1.



This photo shows the major structural crack at the northwest corner of the church.