

ST. MARY'S CHURCH
Father Edward Oen, C.P.P. S. Pastor
9208 Main Street St. Benedict, KS. 66538

Father Edward Oen: Residing at 357 3rd St., Baileyville, KS 66404 Phone: 336-6464
St. Mary's Church Phone: 785-336-3174. Website: www.stmstb.org

Secretary's email: tahaverkamp@bbwi.net

Mass Schedule: Sunday Morning 10:00 AM

Friday morning 8:30AM

Marriage: Contact priest 6 Months before - Baptism Call Father Ed at 336-6464

Confession: First Friday mornings 7:45AM TO 8:00AM before mass

NOVEMBER 11, 2012 THIRTY-SECOND SUNDAY IN ORDINARY TIME



Regular Mass Schedule:

BAILEYVILLE---Saturday 7:00 p.m. and Sunday 8:30 am
Weekday masses at 8:30 a.m.

ST. BENEDICT---Sunday 10:00 a.m.
Fridays, 8:30 a.m.

Mon.--Nov. 12--Vocations to the Priesthood & Religious Life
Tues.--Nov. 13--Mike Reinecke @ Mass @Life Care @11:00AM
Wed.--Nov. 14--Bill Kuckelman
Thurs.--Nov. 15--Liv/Dec Robert & Alma Haug Family
Fri.--Nov. 16--Special Intention for Ben Niehues
Sat.--Nov. 17--People of the Parish
Sun.--Baileyville--Nov. 18--Deceased Members of
Baileyville K of C
Sun.--St. Benedict--Nov. 18--Virgil & Dora Bowhay Family

COLLECTIONS for November 1, 2012—Plate: \$81.00, Envelopes: \$55.00, Stipends: \$5.00, Candle: \$10.00, Stola: \$120.00, All Saints: \$133.00, Total: \$404.00

November 4, 2012: Plate: \$83.00, Envelopes: \$2536.00, Candle: \$24.39, Cemetery: \$194.00, Leaven: \$18.00, World Mission: \$50.00, Human Development: \$15.00, All Saints: \$170.00, Total: \$3090.39

LEAVEN SUBSCRIPTIONS are past due. Price is \$18.00. There is an envelope in your packet to take care of this.

ELEMENTARY RELIGION--Grades K-5-Wednesday, November 14 after school.

THE NEXT INQUIRY CLASS will be today, Sunday, November 11 from 7PM to 8:30PM at Sacred Heart, Baileyville, at the rectory.

SENECA K OF C MEMORAIL MASS is Tuesday, Nov. 13 at 7:00pm at Sts. Peter & Paul Catholic Church. Please remember Ambrose Schmitz who was a past K of C Knight and his family. Sandwiches will be served after the Mass at the hall.

ANOINTING OF THE SICK is scheduled this Sunday, November 11.

BOOK OF REMEMBRANCE: The month of November is a time when we remember in prayer all who have died. Throughout the month, A Book of Remembrance will be placed on a table in the front of church. Parishioners are invited to write the names of deceased loved ones in the book.

CHRISTMAS FLOWERS: If you would like to remember a deceased loved one by having their names placed on a Christmas Poinsettia, please put \$15 with their name in the collection basket by Sunday, December 16th. Donations for the Christmas flowers and decorations may also be placed in the collection basket.

ANGEL TREE: The CCD Classes will once again be sponsoring an "Angel Tree" community service project this year. A tree will be up in the back of church starting in Mid November with angel tags on it. There will be an information sheet on the table besides the tree. Parishioners are asked to choose a tag (or tags) and donate a gift in memory of a deceased loved one. All gifts will be donated to the Nemaha County Christmas Bureau to help the less fortunate families to have a better Christmas. The deadline to have the gifts turned in to St. Mary's is December 2nd, 2012. Please consider supporting this worthwhile cause.

PARISH COUNCIL will clean the statues and dust the church on November 12, 2012.

FATHER FELIX'S CAR: For the past 4 years Fr. Felix's car 1996 Olds Achieva has been sitting in the rectory's garage. He would like to sell it. It has been moved to Mark Bergman's Shop in Seneca. If you are interested please contact Mark Bergman or Richard Siess. It has approximately 143,211 miles on it. Sale pending title.

A GOOD STORY

Christianity is the story of beggars who tell other beggars where to find bread.

Ministries for Nov. 18, 2012

Cross: Isabella Sudbeck

Servers: Ryan Sudbeck & Kirsten Lortscher

Eucharistic Ministers: Jason Haverkamp, Mary Beth Haverkamp, Mary Schmitz, Maurice Feldkamp, Charity Henry

Lector: Blake Mohny

Commentator: Caleb Bradley

Ushers: Zach Bradley & Dalton Rottinghaus

Offertory Gifts: Luke Holthaus & Caleb Bradley

Rosary Leader: Cindy Murphy

Musicians & Vocal Leaders: Theresa Sudbeck & Laura Sudbeck & Youth Choir



Remember in your prayers those who are sick, taking treatments, hospitalized or still recovering: Donna Hulsing, Elijah James Ruegge, Cyrilla Sudbeck, Michelle (Damian) Buessing, Odelia Sudbeck, Jackie Olberding, Jordan Sudbeck, Leroy Tangeman, Nancy Deters, Martha Engelken, Brad Bowhay, Margie Miller, Greyson Murphy (grandson of Stan & Cindy Murphy), Melvin Bergman, Max Rusche, Shirley Claas, Ben Niehues.

ALTAR SOCIETY NOTES

*****November 14, 2012--St. Mary's Annual Church Cleaning**

Circles 1 & 2 are asked to come from 5:00 to 7:00PM. And Circles 3 & 4 are asked to come from 6:00PM to the end. Also, parish council members and officers husbands are asked to help. Please bring buckets, rags, kneepads, etc.

*****February 3, 2013--Annual Soup Day**

*****June 23, 2013--Annual Picnic**

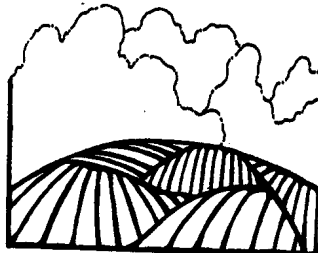
****STUFFED ANIMALS**--We no longer will be collecting stuffed animals for the picnic. We are doing away with the Animal Kingdom and adding some new games.

*****DISHES**--Please pickup dishes that are in back of church that are left from past funerals.

A COLLECTION FOR HURRICANE SANDY will be taken up today. There is a great need for funds to help people with their immediate needs. If you forgot your donation, please put it in next week's collection. Please be sure and mark your envelope Hurricane Sandy and put your envelope number on it.

SPECIAL COLLECTION--Next week's Collection for the Catholic Campaign for Human Development (CCHD) needs your support. CCHD was founded to end the cycle of poverty in America by funding organizations that help individuals help themselves. With the tradition of improving education, housing situations and economic development, CCHD continues to make a positive impact in communities nationwide. **Fight poverty in America. Defend human dignity. Give to the CCHD Collection.**

FUNDRAISER FOR BEN NIEHUES is Saturday, December 8, 2012 at St. Bede's Parish in Kelly. If you would like to donate to the meal, drawing, auction or dance please contact one of the following, Daren Ronnebaum at 785-294-0242, Richard Engelken at 785-336-1426, Steve Evans at 785-364-5997, Teresa Holthaus at 785-336-1076. You may also drop off any donations at Teresa's Styling Salon, 1002 Main in Seneca.



The LORD keeps faith forever,
secures justice for the oppressed,
gives food to the hungry.

Psalm 146:7

NEWS AROUND THE ARCHDIOCESE

The cafeteria is spoken for on these dates: 2012– Nov.22, 25, Dec. 1, 15, 22, 23, 25,29--2013--Feb. 2,3,4,June 12, 16 thru 24,Aug.4.

Donations can be given toward the cost of supporting seminarians in Africa where Father Felix is from . Mark your donations. There are many seminarians but funds for education are needed.

DVD'S of THERESA RETTELE'S Tour of St. Mary's Church is available at the Rectory for the cost of \$10.00.

150th Anniversary Books continue to be a popular item. There are copies remaining for purchase. No additional copies will be printed. Orders can be placed online through the church website at www.stmstb.org or picked up at the Kansas Rural Water Association office west of Seneca. Phone: 336-3760.

CANDLES available for home use. Anyone wanting some call the rectory. 336-3174. The glass container are red and green now. Cost of candles are now \$5.00.



SENECA CHRISTMAS STORE--The Methodist Church has taken over the Christmas Bureau this year. Applicants to take part in the 2012 Christmas Bureau will be November 6, 8 and 15 at the Seneca UMC (7th and Main) at 7:00am to 1:30pm. Applicants will need to provide proof of income for all members of the household.

There is also a box for parishioners to put items in for the Christmas Store in the vestibule. This box will be picked up on November 28. Do not wrap items.

MAX RUSCHE & SHIRLEY CLAAS BENEFIT--Sunday, November 11 from 10:00AM to 2:00PM at the Seneca K of C Hall. Soup, sandwiches and pie will be served. Auction at 2:00PM. If you like to donate items for the meal, raffle or auction, please contact Julie Bergman at 294-2144 or julieb@rainbowtel.net or Clete Kramer at 336-3891 or Lena Winkler at 785-477-1926 or lenaw87@yahoo.com.

STS. PETER & PAUL SCHOOL PTO, SENECA 31st Annual Christmas Wonderland Arts & Crafts Fair will be held Sunday, November 18th from 8 to 3pm, at the Nemaha County Community Building. There will be a lunch stand sponsored by SPPS 8th grade class. Come and check out a variety of crafts and gift items.

STS. PETER & PAUL SCHOOL PTO SUPPER, Seneca, will be held on Sunday, November 18th, serving chili, vegetable beef and chicken noodle soups, sandwiches, hotdogs, chili dogs, desserts and drinks, beginning at 4:30 PM, in the parish hall. Chance drawings with lots of prizes. Freewill offering. Your support is greatly appreciated!

SENECA VOLUNTEER FIRE DEPARTMENT will be selling tickets for the 122nd Annual Fireman's Ball, on November 18th before Mass. The Ball will be held on Saturday, November 24th, at the Seneca Knight's of Columbus Hall from 9 PM to 12 midnight.

ESTATE & COLLECTABLE AUCTION--There will be an Estate & Collectable Auction, Sunday, November 18th starting at 11:00am, at St. James Church in Wetmore, Ks. Lunch Available.

SENECA K of C ANNUAL PANCAKE BREAKFAST will be held on Sunday, November 25th, serving pancakes, sausage, eggs, coffee and juice, from 7 AM to 12:30PM, in the Sts. Peter & Paul Parish Hall, Seneca. The freewill offering donation will help to support seminarians. Your support is greatly appreciated!

ST. JAMES CONSIGNMENT AUCTION--Early consignments wanted for the St. James Consignment Auction in Wetmore, Ks. on Sunday, December 2, 2012. Advertising Deadline is 10:00AM on November 12th. Accepting construction and farm equipment, trucks, cars and farm supplies, hay, housewares, etc. Contact 785-547-5082 or 785-207-0434.

ARCHDIOCESE OF KANSAS CITY IN KANSAS is online. Breaking news and upcoming events can be found on Facebook at www.facebook.com/achkck. Follow us on twitter @archdiocesekck. The archdiocese website is www.archkck.org.

SOUTHERN REGION MEN'S RETREAT at Sacred Heart Parish Hall in Ottawa, Ks, on Saturday, November 17th from 9AM to 3PM. Registration at 8:30AM. Adults: \$20.00 with lunch served and Jr/Sr High Students is \$10.00. To pre-register contact either George Steinberger at 785-835-6654 or Lester Wuertz at 785-835-6298

ST. GREGORY'S MARYSVILLE PARISH MISSION given by Fr. James Sichko on November 11 —14 at 7:00pm. This is an event for the entire family to attend. Fr. Jim is a dynamic speaker. All surrounding parishes are invited.

THE POOR--As Christians, we hear a lot about the witness and service that we are called to render to the poor among us. However,

the poor also have a witness and a service to render to us. Like the actions of the widow in today's Gospel, the openness and generosity of many of those who are poor, even in the midst of their own poverty, bear witness to the fact that, ultimately, we can depend only on God. Giving one's all witnesses that God will give all to anyone who trusts in divine goodness.

The poor or disadvantaged also serve. They serve judgment on our individual and corporate ways of acting. If people are sleeping in our streets, that is a judgment on our priorities regarding others. At the same time, the poor can act as mediators of salvation.

Christ
 was offered
 once
 to take
 away
 sins



© J. S. Paluch Co., Inc.

When they care for others they can redeem our indifference and insensitivity, lead us to care as well, and save us from ourselves. Copyright © J. S. Paluch Co.

TREASURES FROM OUR TRADITION--New religious faith gives fresh lenses for viewing human customs, and the wisdom to transform them. In the ancient world, the Romans feared the dead. Funeral customs were designed to hasten the departure of souls to the next world. Cremation was the rule, although burial increased in popularity in the second century. Procession from the place of death to the place of cremation or burial was the most important part of the funeral. Those who carried the funeral bier carried it low, close to the ground, to promote the soul's departure to the nether world.

Christians, on the other hand, did not fear the dead, but cherished them as they consigned them to Christ's love and protection. Gradually, they began to reject customs rooted in fear. Christians carried their dead to their resting places singing, with the bier carried high, away from the ground and toward the heavens. For the Christian, the grave was a sign of hope and a place of remembrance. Superstitious Romans feared burial places, and so the Christians cherished them as places of remembrance and prayer, and in time, even celebrated the Eucharist there. In November, many of us visit the cemetery for prayer and the autumn clean-up. By cherishing our dead, we are responding in faith to a vital part of our Christian tradition.

SAINTS AND SPECIAL OBSERVANCES

- Sunday: Thirty-second Sunday in Ordinary Time; Veterans Day; Remembrance Day (Canada)
- Monday: St. Josaphat
- Tuesday: St. Frances Xavier Cabrini
- Thursday: St. Albert the Great
- Friday: St. Margaret of Scotland; St. Gertrude
- Saturday: St. Elizabeth of Hungary

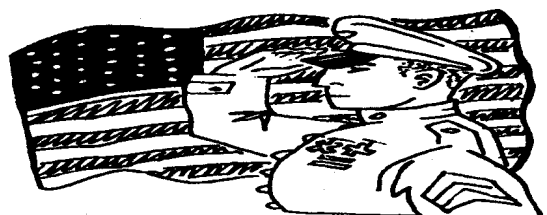
HOLY HUMOR

An old-time pastor was riding furiously down the road, hurrying to get to the church on time. Suddenly, his horse stumbled and threw him to the ground.

Lying in the dirt, his body wracked with pain, the pastor called out. "All you angles in heaven, help me upon my horse.

With extraordinary strength, he leaped onto the horse's back and fell off the other side.

From the ground again, he called again, "All right, just half of you angels this time!"



Veterans Day

© J. S. Paluch Co., Inc.