



**Sacred Heart Church**

357 N Third Street, Baileyville, KS 66404

Website: [www.shbaileyville.com](http://www.shbaileyville.com)



**St. Mary's Church**

9208 Main Street, St. Benedict, KS 66404

Website: [www.stmarystbenedict.org](http://www.stmarystbenedict.org)

## Sixth Sunday of Easter

May 5, 2024

### Pastor

**Fr. Reginald Saldanha**

Office: 357 N Third Street

(P.O. Box 36)

Baileyville, KS 66404

Ph: 785-336-6464; Email: [pastor@shbaileyville.com](mailto:pastor@shbaileyville.com)

Office: [office@shbaileyville.com](mailto:office@shbaileyville.com)

### Mass Schedule

Saturday: 7:00p.m. - Sacred Heart Church

Sunday: 8:30a.m. - Sacred Heart Church

10:15a.m. - St. Mary's Church

Tue & Thu: 8:30a.m. - St. Mary's Church

Wed & Fri: 8:30a.m. - Sacred Heart Church

Holy Days of Obligation - As Announced

### Confessions

Sacred Heart: 6:00 - 6:45p.m. Saturdays

8:00 - 8:30a.m. Sundays

St. Mary's: 8:00 - 8:30a.m. Tuesdays & Thursdays

And anytime by appointment.

### Baptism

Please contact the pastor

### Marriage

Notify the pastor at least 6 months prior to wedding

### Pastoral care of the sick

Please call the Pastor at 913-530-3618 for anointing,

Holy Communion and pastoral visits.

### CCD Faith Formation

*(At Sacred Heart, Baileyville)*

Elementary (Grades 1-5) - Wednesdays 7:30 - 8:30pm

Youth (Grades 6-12) - Wednesdays 7:30 - 8:30pm

Hall Rental (Sacred Heart): Deann Sudbeck: 785-294-0028:

Hall Rental (St. Mary's): Mary Beth: 785-294-1131

Do you wish to become a member of our parish? We welcome you! Please contact the pastor or the parish office.

## Sixth Sunday of Easter

May 5, 2024

*From the Pastor's Desk:*



### Location change for St. Mary's Parish Masses

Starting this week, Monday May 6 until the restoration work is complete, St. Mary's Sunday as well as the weekday Masses will be held at Sacred Heart Church in Baileyville. The second Mass on Sunday will be held at 10:00 AM and the liturgy of that Mass will be coordinated by St. Mary's Parish. The weekday Masses will be celebrated at 8:30 AM.

This change will stay for at least three months after which St. Mary's parishioners will be able worship in their own Church. The electrical work will continue through November & there will be no need to move the Masses to a different location.

Since the Sunday 10AM Mass is St. Mary's Parish Mass, the collections taken at that Mass are part of St. Mary's parish. The money counters will count the collections at Baileyville rectory and deposit it in the bank as usual. Please DO NOT drop your Sunday envelopes in the donation box at St. Mary's Church. Thank you for your understanding & cooperation.

*- Fr. Regie*



### Coffee & Donuts

Please join us for coffee & donuts at the front of the Church after the Mass in celebration of May Crowning / the Graduation recognition & New parishioners' Welcome.



### Easter House Blessings

Easter House Blessings are going on. Sign up is still available for the following areas. The available times are from 5:00—8:00pm on Tuesdays, Wednesdays & Thursdays. Use this QR code to sign up or contact Roxie at 785-336-1108.

**May 7-9:** Houses in Seneca city limit

**May 14-16:** Houses in Baileyville town limit

**May 21-23:** Houses in St. Benedict town limit

Don't complain about your parish;  
if it were perfect you couldn't belong.

### Ministry Schedule (Sunday, May 12)

<b>Server</b>	Eve K, Weston H, Keira K, Jack T, Lavin S.
<b>EMHC</b>	Lisa Holthaus <b>Choir:</b> Brian Holthaus
<b>Lectors</b>	<b>L1:</b> David Huerter <b>L2:</b> Joanie Holthaus
<b>Ushers</b>	Martin Haug, Craig, Jason & Tom Haverkamp
<b>Music</b>	Marilyn Holthaus <b>Cantor:</b> Tammy Holthaus
<b>Greeters</b>	Brian Holthaus Family <b>Children's Lit:</b> N/A
<b>Rosary</b>	David Huerter <b>Counters:</b> Diane & Deb
<b>Gifts</b>	Will & Charity Henry Family



### Mass Intentions



Sat. (May 4)	+ Shirley Hasenkamp
Sun. (8:30am)	People of St Mary's & Sacred Heart parishes
10:15am (SM)	+ Melvin Ronnebaum
Tues. (May 7)	+ Melvin, Zita & Daniel Bergman
Wed. (May 8)	+ Rosie Haverkamp
Thu. (May 9)	+ Kathleen Ronnebaum
Fri. (May 10)	L/d: Sylvester & Dorothy Mae Koch family
Credo (11am)	L/d: Lillis-Arlene Haverkamp
Sat. (May 11)	+ Alvin & JoAnn Deters
Sun. (8:30am)	People of St Mary's & Sacred Heart parishes
10:00 a.m.	+ Odelia Sudbeck

### This week's Special Observance

Thursday	The Ascension of the Lord
Friday	St. John Avila & St. Damien de Veuster
Sunday	Seventh Sunday of Easter/Ascension of the Lord

**Last weekend's Collection: 2,362.00**

Thank you for your generosity!



### Rosary at the Grotto

Will begin this year on May 8. On Wednesdays during May it will be at 7pm. During the months of June, July, and August it will be at 7:30pm and we will go back to 7pm again during September." As always it's a weather-permitting event.

♦ "After an unusually busy day that included three weddings followed by a funeral, an exhausted and weary pastor in Indianapolis – at the end of the service – congratulated the widow." 😊

♦ There once was a pious young priest who lived almost wholly on yeast. He said: "It is plain, We must all rise again. And I wanted to get started at least." 😊



### Remember In Your Prayers



Shirley Schmitz, Gwen Kuckelman, Bernice Heiman, Briggs & Bodhi Schmitz, Dave Holthaus, Benjamin Waller, Jane Nordhus, Jan Tomlinson, Virginia Koelzer, Deb Koch, Cyril Schmitz, Charlie Koch, Dawn Feldkamp, Lewis Burke, Amy Lierz, Kim Domann, Jackie S. Deters, Trish Engelken, Tim Sack, Kathy Buessing, Maurice Heiman, Albert Olberding Jr., Darlene Kulhman, Gary Scott, Sarah Conroy, Vivianne Marousek, Stan Murphy, Kristi Meyer, Joyce Koch.

*Please call or email to remove the name from the list.*



## CCD News

May Crowning will be celebrated this Sunday (May 5). 5th grade and younger ones are invited to walk in the entrance procession.. Please bring flowers for Mary. This year's all the first Holy Communion children are asked to wear their first communion clothes to lead the procession.

The CCD program is in need of a **4th grade teacher, Confirmation teacher** (6th, 7th, and 8th grades) and **JR/SR High School DRE**. Please prayerfully consider if you can help with this essential ministry. If interested contact Pam Deters (785-294-1427), Betsy Macke (785-336-1512) or Fr. Regie.

## Altar Society News

- The Altar Society Officers will be passing out the picnic worklist packets on Sunday **April 28th** and **May 5th** before and after Mass. Please remember to bring your money for the chicken and chance book donations.
- We are needing more glassware for the dime toss game and cool whip sized containers for leftovers. Please leave those items on the back porch of the rectory.
- Also if anyone has items that they want to donate for the Picnic Auction, please contact Laurie Stallbaumer, Vice President at 785-294-1193.
- New Member Welcome Reception will be **May 5th** after Mass. Please join us for donuts/cookies and coffee/juice to help welcome them to our parish. (weather permitting it will be held outside of the church).



## May Ministry Schedule

Printed copies available at the back of the church; and also posted on the website.

## National Eucharistic Pilgrimage

Our parish would like to bring a group of pilgrims to the National Eucharistic Pilgrimage in Atchison on **Tuesday, June 25th**. We would be leaving Baileyville around 12:30pm and join the pilgrimage to walk with Jesus in the Blessed Sacrament from the Missouri River bridge through Atchison to Benedictine College campus. Solemn Vespers with the Monks in the Abbey will be at 5pm, followed by dinner on campus and live music. The evening will conclude with Adoration and we plan to leave Atchison around 8:45pm to arrive in St Benedict at 10pm.

If you are not able to walk the route, we would still like you to join us for the events on campus.

We would like to rent passenger vans to go as a group to attend this event. Please let us know if you plan to attend this event. I will be sending you a link through flocknote for signing-up. Please sign up by **May 19th** for transportation with the parish group.

In everything, whether it is a thing sensed or a thing known, God himself is hidden within. —St. Bonaventure

## Church, Hall Calendar 2024

May 5	-	Wedding Anniversary/Hospitality Sunday
May 26	-	Lueger Hall
June 9	-	Hospitality Sunday
June 9	-	Nolte Hall
June 16	-	Annual Hall Cleaning
June 22	-	Annual Church Picnic
June 23	-	Picnic Clean Up
July 7	-	Stallbaumer Hall
Aug 14	-	Altar Society Meeting Hall



## Do we have to pray the Rosary every day?

Praying a daily Rosary is not required but it is recommended. It is a meditative prayer that facilitates a deeper engagement with the mysteries of Christ's life, alongside the intercessory role of the Virgin Mary.

St. Dominic, who founded the Dominican Order, promoted the Rosary and credited praying the Rosary with ridding the Church of the Albigensian heresy. Pope St. Pius V attributed the miraculous victory of Christian forces at the Battle of Lepanto in 1571 to the Rosary. Since then, many popes have urged us to pray this prayer.

The repetitive nature of the Rosary's prayers, such as the Hail Mary, fosters a meditative state that can lead to a sense of peace. This repetition is not just a mnemonic device but a way to quiet the mind and open the heart to God's guiding voice. Moreover, praying the Rosary is also a way to seek Mary's intercession. As the Mother of Christ, her proximity to Jesus is seen as a powerful aid in bringing our prayers before God.

## "What I command you, is to love one another."

Jesus commands His disciples to love one another as He has loved them. This directive is rooted in His own obedience and love for the Father, highlighting love as the fundamental principle of Christian life. As followers of Christ, we are called to live out the love of God in a real and tangible way. This is what it means to be a disciple of Christ. Let us strive to embody this love in all that we do and in every corner of our lives and beyond.



"My heart goes out to the sick, the poor, the underprivileged, the lonely, and those who have a different color, nationality, or background than my own. But my mother-in-law drives me up the wall."

from JoyfulNoiseletter.com

## Submitting Bulletin News

If you would like to send an announcement to the parish bulletin, email to: Email: [pastor@shbaileyville.com](mailto:pastor@shbaileyville.com) OR call : 785-336-6464 OR Mail to: P.O. Box 36, Baileyville, KS 66404. Bulletin announcements must be submitted by Wednesday of the week.

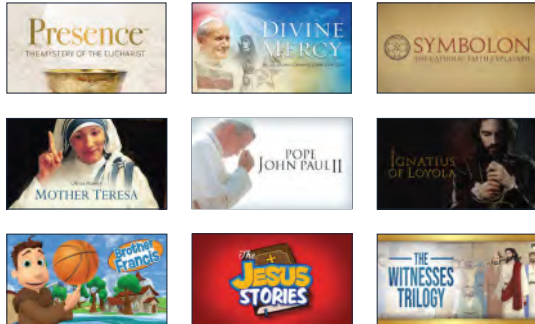


FORMED®

## We're giving you FORMED!

Learn and enjoy your faith at home and on the go, from any device.  
Sign up for free at [formed.org/signup](http://formed.org/signup)

### Watch Award-Winning Programming



### Listen on Your Commute



POWERED BY THE AUGUSTINE INSTITUTE

PLEASE SUPPORT OUR ADVERTISERS



Dennis Schmitz  
Dennis.Schmitz.11s@gmail.com;  
**785-336-3999 (cell/text)**

Lawn & Shrub Sprinklers • Free Estimates  
Certified Backflow Testing • Sales & Maintenance

# SBS

INSURANCE AGENCY

305 Main St. • Seneca, KS

**785.336.2821**

[www.sbsins.com](http://www.sbsins.com)

**FOR SALE**  
**SENECA REALTY INC.**

Residential Sales • Farm Auctions

[WWW.SENECAREALTY.NET](http://WWW.SENECAREALTY.NET)

ELK<sup>STATE</sup>  
BANK



[www.elkstatebank.com](http://www.elkstatebank.com)  
MEMBER FDIC



521 MAIN ST • SENECA, KS • 785-336-6311  
Christian Books • Gifts • Home Decor

Pray the rosary for peace  
and end to abortion.



**STALLBAUMER**  
**LUMBER & HARDWARE CO., INC.**

A full line of building materials & hardware supplies for  
**Residential - Commercial - Agricultural Needs**  
**785-336-3551 • Seneca, KS**

Todd & Melissa Stallbaumer and Stephen & Karen Stallbaumer, Owners  
[www.slhlumber.com](http://www.slhlumber.com)



*Heritage Real Estate*

PROFESSIONAL REAL ESTATE BROKERAGE  
HOME, FARM LAND, AND  
COMMERCIAL SALES  
[www.HeritageSuccess.com](http://www.HeritageSuccess.com)